



# Oncoinvent AS



ABG Norwegian Biotech Oncology Seminar

11. June 2019

Jan A. Alfheim  
CEO

# Oncoinvent AS



- Founded in 2010
- 3rd company started by serial entrepreneurs Dr. Roy H. Larsen and Professor Øyvind S. Bruland
- 19 fulltime employees, 3 Industrial PhDs, 2 part-time
- Own clinical product production facility



Dr. Roy H. Larsen, Ph.D.



Professor of clinical oncology Øyvind S. Bruland



Betalutin<sup>®</sup>

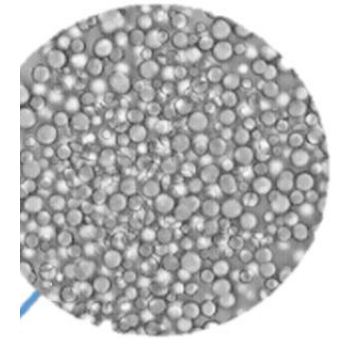
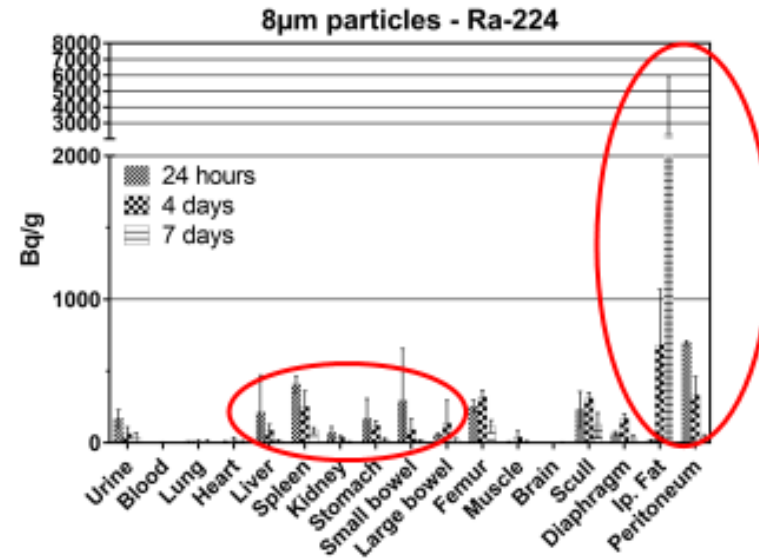
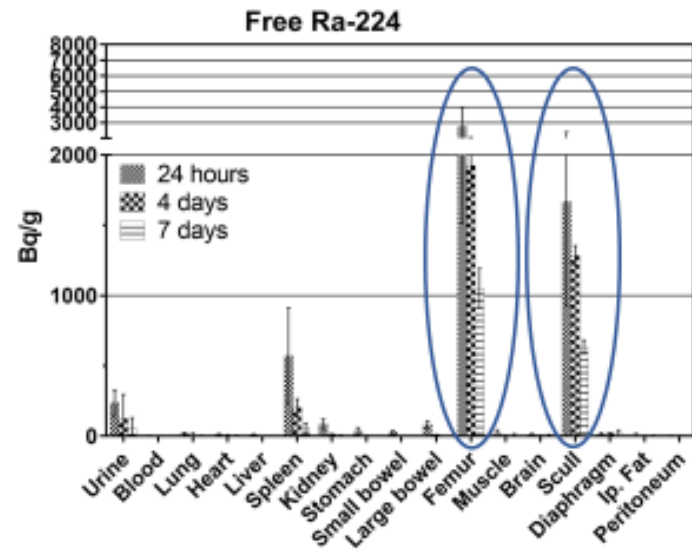


Radspherin<sup>®</sup>

# Radspherin<sup>®</sup>

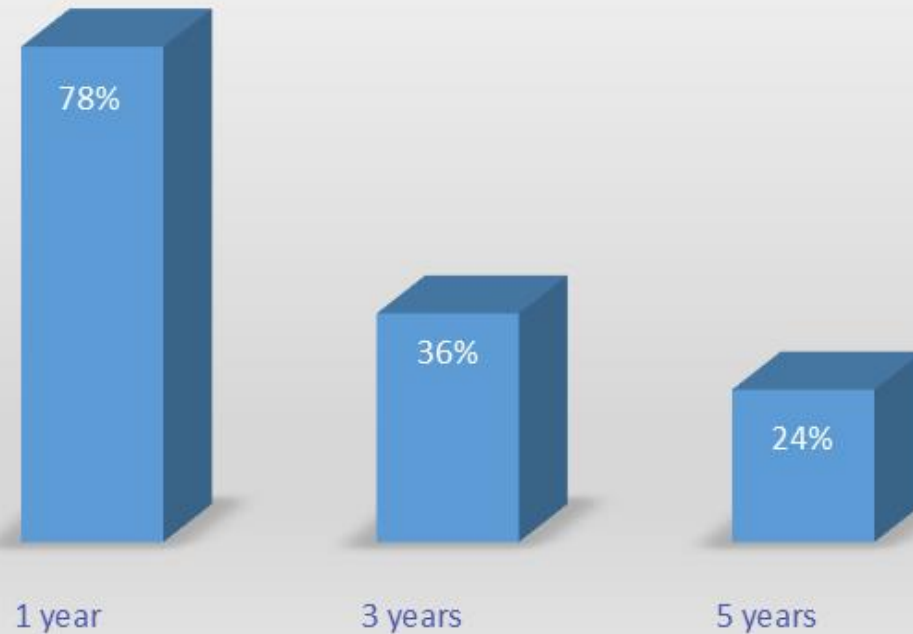
Pre-clinical biodistribution data:

## Biodistribution of free Ra-224 versus Ra-224 labelled microparticles



# Peritoneal carcinomatosis

Long-term survival of patients with peritoneal carcinomatosis of colorectal origin



Malignant ascites is a serious condition commonly related to PC

Peritone

ure of ovarian cancer

# Radspherin<sup>®</sup> therapeutic goal

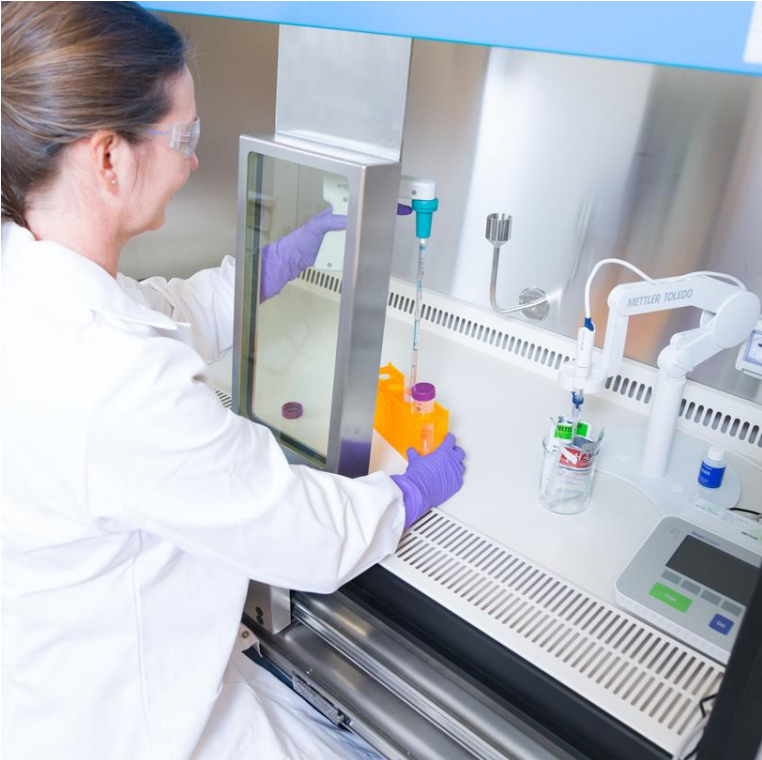
«Preserve the surgical complete response»

## Overview of company highlights since last ABG seminar

- New Radspherin<sup>®</sup> efficacy data published
- Radspherin<sup>®</sup> research presented at SNMMI and EANM
- CTA sent to NOMA for start of phase I clinical trials
- Clinical trial expanded to include colorectal cancer patients
- Radspherin<sup>®</sup> selected for 19.6 MNOK BIA and IN funding

# The Oncoinvent production and lab facilities

Oncoinvent production site  
inspected and authorized for  
production of clinical grade  
Radspherin<sup>®</sup> by Norwegian  
Medicines Agency



# Oncoinvent shareholders\*



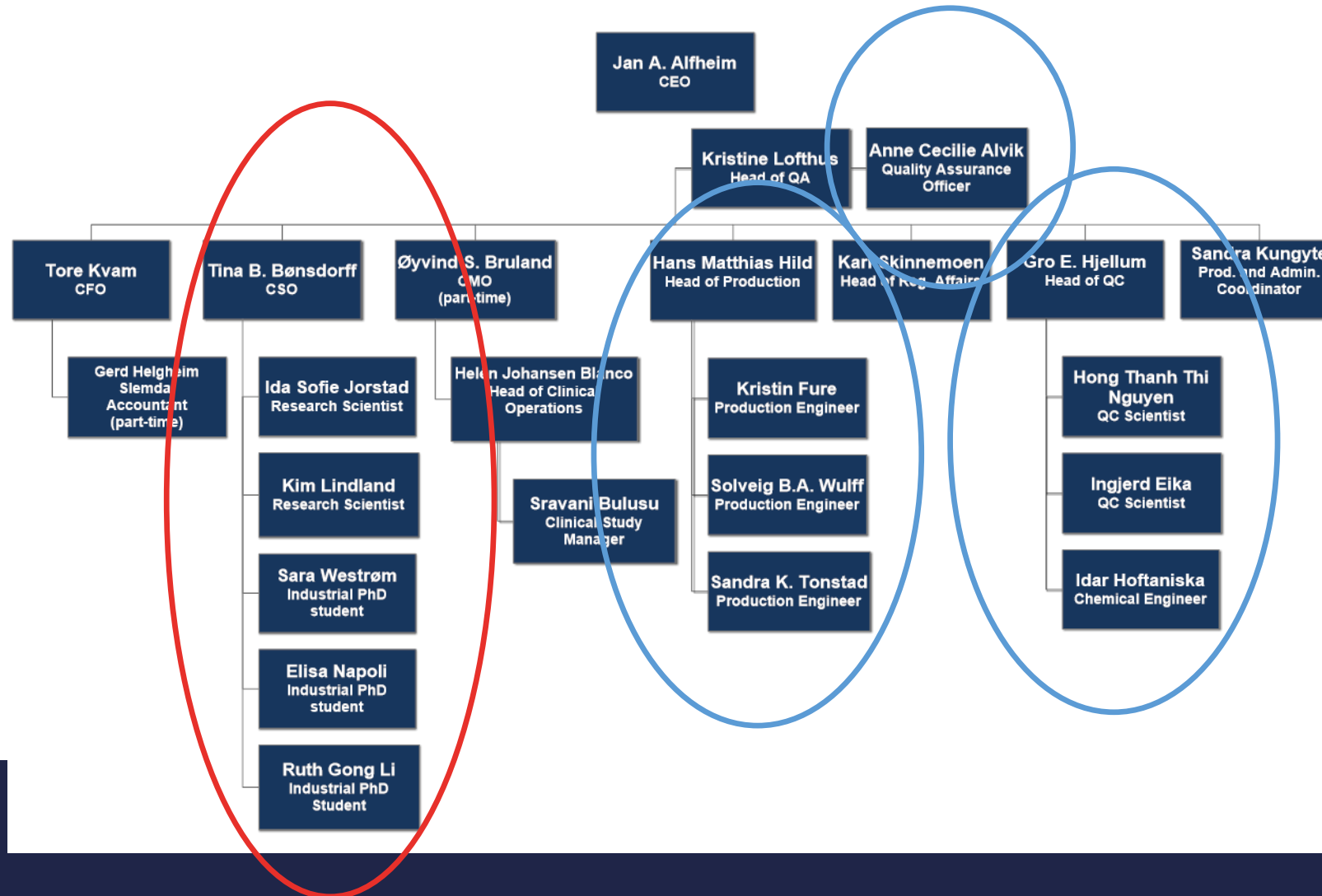
Shareholder	Shares	%
Sciencons AS	3,185,000	24.2 %
Geveran Trading Co Ltd.	1,098,000	8.3 %
Roy H. Larsen	678,000	5.1 %
Radiumhospitalets forskningsstiftelse	670,880	5.1 %
Blaahaugen AS	642,500	4.9 %
Must Invest AS	517,000	3.9 %
Canica AS	493,300	3.7 %
Bentax AS	450,000	3.4 %
Syntax a.s.	440,000	3.3 %
Trond Larsen	310,000	2.4 %
Tina B. Bønsdorff	277,600	2.1 %
CGS Holding AS	260,000	2.0 %
Helene Sundt AS	260,000	2.0 %
Thora J. Jonasdottir	255,000	1.9 %
Lucellum AS	192,351	1.5 %
Inven2	158,500	1.2 %
Artal AS	138,670	1.1 %
Watrium AS	130,000	1.0 %
Kai H. Schluter	120,000	0,9 %
Alpine Capital AS	108,240	0.8 %
Other shareholders	2,805,370	21.2 %

No significant changes to the company's shareholder base during 2018

(\* as per 29.04.2019)



# Oncoinvent organisational growth



- Increased capacity in R&D
- Increased capacity in production, QC & QA

# Recent developments

- A preclinical study designed to support multiple injection segment of phase I clinical trials generated unanticipated data
- The new data indicated that latest clinical formulation of Radspherin<sup>®</sup> may not be able to provide the desired therapeutic effect in human trials

## Number of preclinical therapy and biodistribution studies performed from 2015 - 2018

Type of Study	Number of Studies	Number of test subjects
Therapy / efficacy	18	439
Biodistribution	11	94

The studies demonstrated a successful proof of principle

## Next steps

- The Oncoinvent research team is working on re-adjusting the Radspherin formulation to maximize the therapeutic potential of the drug product
- The company intends to enter clinical testing later this year once the new formulation has shown to provide the desired therapeutic effect in a preclinical setting



# Innovations for better cancer care



Thank you for your attention

